

BEFORE



AFTER



# TONED WITH 07M FORMULA

**STARTING LEVEL:**

Natural Level 4 with previously highlighted hair

**FORMULA 1 (ZONE 1):**

2 oz. (60ml) **Shades EQ Gloss** 04M Smoked Cedar

2 oz. (60ml) **Shades EQ** Processing Solution for Precision Application

**FORMULA 2 (ZONES 2-3) :**

2 oz. (60ml) **Shades EQ Gloss** 07M Driftwood

2 oz. (60ml) **Shades EQ** Processing Solution for Precision Application

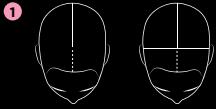


**Icon**

1-800-862-3811  
604-591-2339

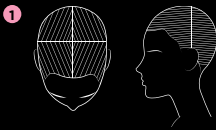
# TONED WITH 07M APPLICATION

**STEP 1: SECTIONING**



Separate the front from the back with a vertical parting from the top of the head to the top of the ear. Repeat on the opposite side. Divide the back equally with a vertical parting from the top of the head to the center of the nape, and from the top of the head to the front hairline.

**STEP 2: APPLICATION**



Starting in the back-left quadrant, take a 1/4" (0.5 cm) diagonal back slice and apply **Formula 1** to Zone 1, blurring slightly into Zone 2. Then apply **Formula 2** to Zones 2-3, blurring slightly into **Formula 1** to create a seamless transition. Continue to drop down sections and repeat application until the back quadrant is complete, then repeat on opposite side.

2 Once back quadrants are complete, move to the front quadrant and repeat the same application method as the previous sections. Once complete, repeat on the opposite side.

3 Process for 20 minutes at room temperature, then rinse, shampoo and condition with **Redken Color Extend Magnetics**.

